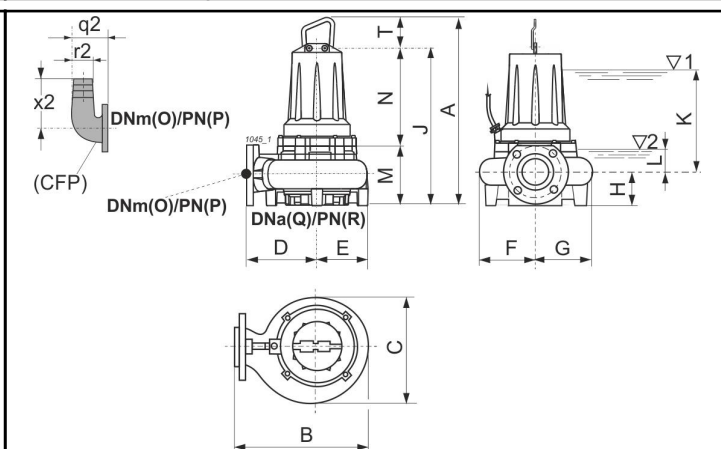
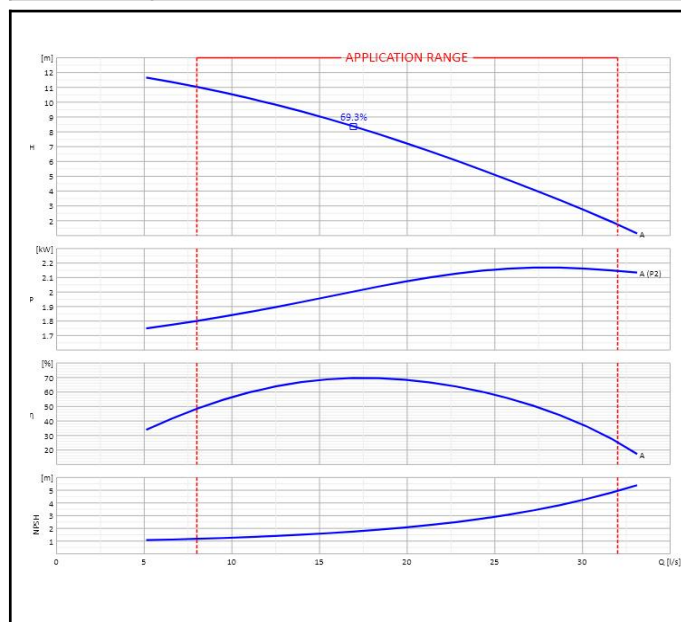


Customer:		Ref.:	
Item	Quantity	Required flow rate	n.d.
Type	SUBMERSIBLE ELECTRIC PUMP FOR WASTE WATER	Model	KCM080HA+002241N1



Dimensioni [mm]							
A	586	J	486	q2	165		
B	407	K	297	R	16 (*)		
C	317	L	75	r2	75		
D	245	M	196	T	100		
E	162	N	290	x2	217		
F	144	O	80				
G	173	P	16				
H	121	Q	80				

OPERATING DATA- ISO 9906:2012 3B -					CONSTRUCTION CHARACTERISTICS				
Q [l/s]	H [m]	P [kW]	η [%]	NPSH [m]	Delivery diameter		80		mm
					Type of Impeller		Single channel		
					Moment of inertia		0.05182 Kgm²		
					Electric pump weight	Installation	75		Kg
					Seal on pump side	Motor side	Mechanical		Mechanical
					Type of installation		n.d.		
					Operation		Continuous (S1)		

OPERATING LIMITS			OPERATING CHARACTERISTICS			
Pumped liquid	Waste water		Service flow rate	n.d.		n.d.
Max. temperature of pumped liquid	40	°C	Service head	n.d.		n.d.
Maximum density	1	kg/dm³	H (Q=0)	Hmax	14.22	11.01
Maximum viscosity	1	mm²/s	Qmin	Qmax	8	32
Max. solid content	4	%	Power consumption at duty point	n.d.		n.d.
Max. number of starts/hr	20		Max power consumption	2.17		kW
Free passage	75	mm	Pump efficiency	Overall	n.d.	n.d.
Minimum immersion depth	297	mm	Sense of rotation (*)	Clockwise		
			Number of pumps installed	Operating	Stand-by	
				1	0	

ELECTRIC PUMP MATERIALS		ELECTRIC MOTOR CHARACTERISTICS			
Support bearing	Nodular cast iron	Nominal power	2.2	kW	
Flange bearing	Cast iron	Rated frequency	50	Hz	
Cable clamp	Cast iron	Rated voltage	400	V	
Round power cable	n.d.	Rated current	5.5	A	
Motor casing	Cast iron	No. Poles	4	Rotation speed	1350
Stator	Electrical steel				1/min
Complete shaft with rotor	Stainless steel/Magnetic steel	Type of motor	3 ~		
Conductivity probe	n.d.	Efficiency 4/4	68.0 %		
Elastic ring	Steel	Power factor 4/4	0.860		
Delivery body	Cast iron	Is/In	3.9	Ts/Tn	n.d.
Impeller	Cast iron	Thermal protection	Klixon		
Oil box	Cast iron	Insulation class	F		
Ring impeller seat	Steel/Rubber	Protection class	IP68		
Mechanical seal on pump side	silicon carbide/ceramic	Explosion-proof	n.a.		
Mechanical seal on motor side	Ceramic/graphite	Power supply cable	Length	NSSHO	10
Screws and nuts	Stainless steel	Efficiency class	S.F	n.d.	

Notes:	(*) Viewed from motor coupling side		
OFFER No.	Pos.	Date	
		16/01/2020	