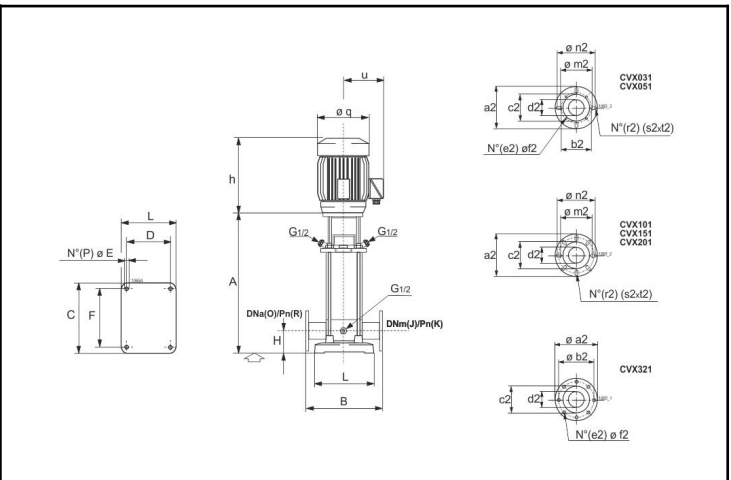
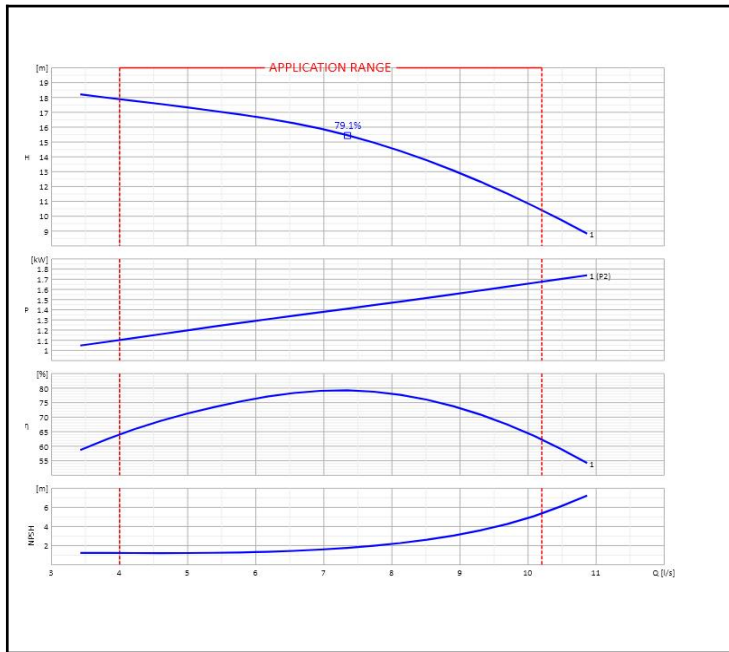


Customer:		Ref.:	
Item	Quantity	Required flow	n.d.
Type	VERTICAL MULTISTAGE ELECTRIC PUMP	Model	CVX321/1+E0220T212-V



A	504	E	14	L	227		
a2	185	e2	8	O	65		
B	320	F	240	P	4		
b2	145	f2	18	q	195		
C	299	h	330	R	16-25-4		
c2	107	H	105	u	160		
D	170	J	65				
d2	74	K	16-25-4				

OPERATING DATA - ISO 9906:2012 3B -					CONSTRUCTION CHARACTERISTICS	
Q [l/s]	H [m]	P [kW]	η [%]	NPSH [m]	Delivery diameter	65
					Weight	70.7 Kg
					No. Stages	1
					Seal	Mechanical
					Type of installation	Vertical

OPERATING LIMITS			OPERATING CHARACTERISTICS		
pumped liquid	Water		Service flow rate	n.d.	n.d.
Max. temp. of pumped liquid	90	°C	Service head	n.d.	
Maximum density	1	kg/dm ³	Qmin	4	10.2
Maximum viscosity	1	mm ² /s	H (Q=0)	18.81	17.86
Maximum solid content	n.d.		Hmax (Qmin)		
Max. number of starts/hr	n.d.		Power consumption at duty point	n.d.	
			Max. power consumption	1.67 kW	
			Pump efficiency	n.d.	n.d.
			Overall efficiency	n.d.	n.d.
			Sense of rotation (*)	Anticlockwise	
			Number of pumps installed	Operating	Stand-by
				1	0

PUMP MATERIALS		ELECTRIC MOTOR CHARACTERISTICS	
Lantern bracket	Cast iron	Brand	
Pump head	Stainless steel	Model	400
Stage casing	Stainless steel	Nominal power	2.2 kW
Shaft	Stainless steel	Rated frequency	50 Hz
Mechanical seal	Silicon carbide/silicon carbide	Rated voltage	400 V
Diffuser	Stainless steel	Rated current	4.35 A
Impeller	Stainless steel	No. Poles	2
Wear ring	PTFE	Rotation speed	2895 1/min
Intermediate bearing	Bronze	Efficiency 4/4 - 3/4	85.9 %
Bottom bearing	Tungsten carbide/tungsten	Power factor 4/4 - 3/4	0.85
Inlet/Outlet Flanges	Cast iron	Type of motor	3 ~
Pump casing	Stainless steel	Is/In	7.6
Base plate	Cast iron	Ts/Tn	2.2
Seal ring	Rubber EPDM	Protection class	IP55
		Insulation class	F
		Thermal protection	n.d.
		Efficiency class	IE3

Notes:	(*) View from electric motor side
OFFER No.	Pos.
	Date
	14/01/2020