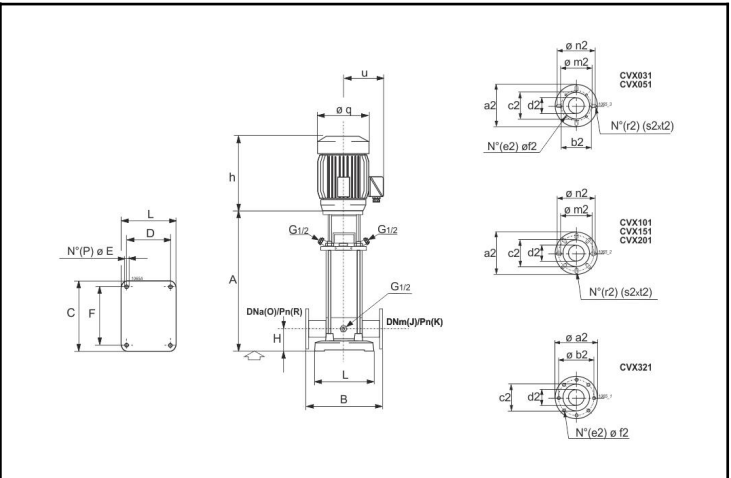
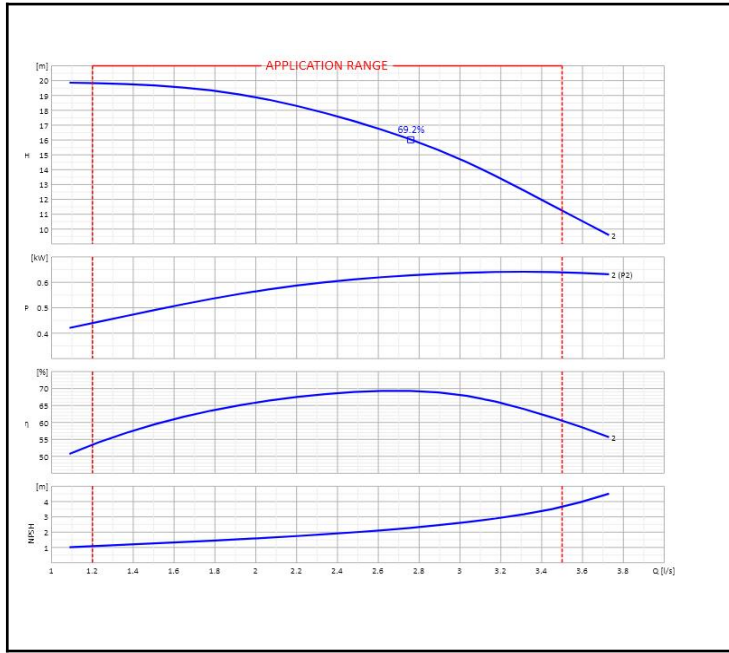


<b>Customer:</b>		<b>Ref.:</b>	
Item	Quantity	Required flow	n.d.
Type	VERTICAL MULTISTAGE ELECTRIC PUMP	Model	CVX101/2+E0075T212-V



A	357	F	215	O	40		
a2	150	h	260	P	4		
B	280	H	80	q	165		
C	248	J	40	R	16-25		
c2	79	K	16-25	r2	4		
D	130	L	200	s2	19		
d2	42	m2	105	t2	24		
E	14	n2	115	u	145		

OPERATING DATA - ISO 9906:2012 3B -					CONSTRUCTION CHARACTERISTICS	
Q [l/s]	H [m]	P [kW]	η [%]	NPSH [m]	Delivery diameter	40
					Weight	37 Kg
					No. Stages	2
					Seal	Mechanical
					Type of installation	Vertical

OPERATING LIMITS			OPERATING CHARACTERISTICS			
pumped liquid	Water		Service flow rate	n.d.		n.d.
Max. temp. of pumped liquid	90	°C	Service head	n.d.		n.d.
Maximum density	1	kg/dm³	Qmin	1.2	3.5	l/s
Maximum viscosity	1	mm²/s	H (Q=0)	19.95	19.81	m
Maximum solid content	n.d.		Power consumption at duty point	n.d.		n.d.
Max. number of starts/hr	n.d.		Max. power consumption	0.64		kW
			Pump efficiency	n.d.	n.d.	n.d.
			Overall efficiency	Anticlockwise		
			Sense of rotation (*)	Operating	Stand-by	
			Number of pumps installed	1	0	

PUMP MATERIALS		ELECTRIC MOTOR CHARACTERISTICS		
Lantern bracket	Cast iron	Brand		
Pump head	Stainless steel	Model	400	
Stage casing	Stainless steel	Nominal power	0.75	kW
Shaft	Stainless steel	Rated frequency	50 Hz	
Mechanical seal	Silicon carbide/silicon carbide	Rated voltage	400 V	
Diffuser	Stainless steel	Rated current	1.62 A	
Impeller	Stainless steel	No. Poles	2	2865 1/min
Wear ring	PTFE	Efficiency 4/4 - 3/4	80.7 %	
Inlet/Outlet Flanges	Cast iron	Power factor 4/4 - 3/4	0.83	
Pump casing	Stainless steel	Type of motor	3 ~	
Base plate	Cast iron	Is/In	7	Ts/Tn 2.3
Seal ring	Rubber EPDM	Protection class	IP55	
		Insulation class	F	
		Thermal protection	n.d.	
		Efficiency class	IE3	

<b>Notes:</b>	(*) View from electric motor side	
OFFER No.	Pos.	Date
		14/01/2020