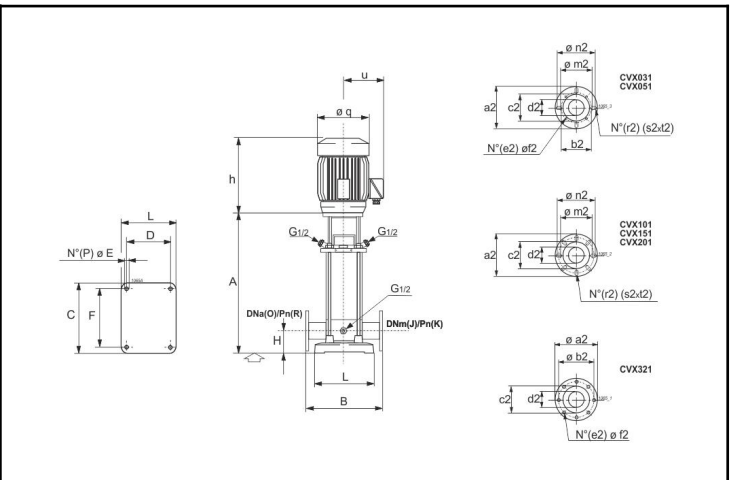
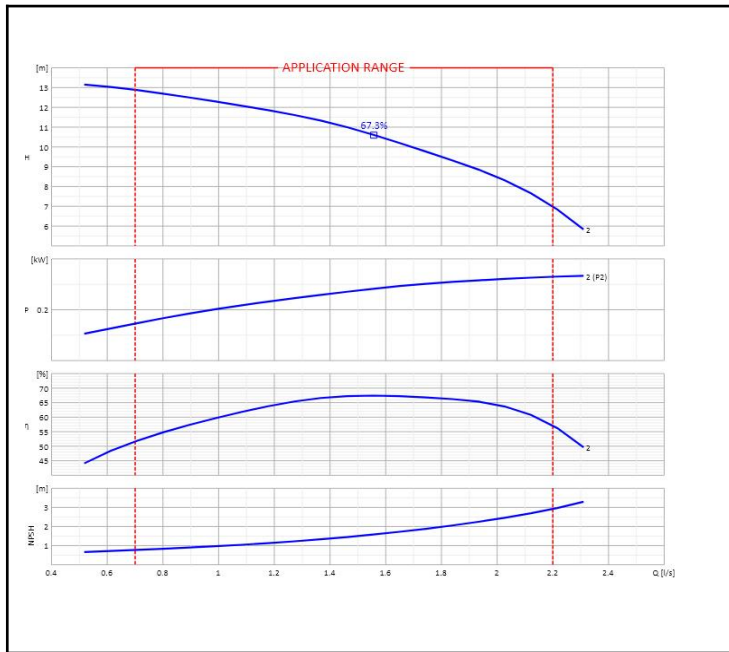


Customer:		Ref.:	
Item	Quantity	Required flow	n.d.
Type	VERTICAL MULTISTAGE ELECTRIC PUMP	Model	CVX051/2+E0037T211-V



A	282	E	14	L	150	s2	19
a2	140	e2	4	m2	89	t2	27
B	250	F	180	n2	105	u	80
b2	85	f2	14	O	25/32		
C	210	h	217	P	4		
c2	58	H	75	q	145		
D	100	J	25/32	R	25		
d2	32	K	25	r2	4		

OPERATING DATA - ISO 9906:2012 3B -					CONSTRUCTION CHARACTERISTICS	
Q [l/s]	H [m]	P [kW]	η [%]	NPSH [m]	Delivery diameter	25/32
					Weight	21 Kg
					No. Stages	2
					Seal	Mechanical
					Type of installation	Vertical

OPERATING LIMITS			OPERATING CHARACTERISTICS		
pumped liquid	Water		Service flow rate	n.d.	n.d.
Max. temp. of pumped liquid	90	°C	Service head	n.d.	
Maximum density	1	kg/dm³	Qmin	0.7	2.2
Maximum viscosity	1	mm²/s	H (Q=0)	14.14	12.87
Maximum solid content	n.d.		Hmax (Qmin)	m	
Max. number of starts/hr	n.d.		Power consumption at duty point	n.d.	
			Max. power consumption	0.26 kW	
			Pump efficiency	n.d.	n.d.
			Overall efficiency	n.d.	n.d.
			Sense of rotation (*)	Anticlockwise	
			Number of pumps installed	Operating	Stand-by
				1	0

PUMP MATERIALS		ELECTRIC MOTOR CHARACTERISTICS	
Lantern bracket	Cast iron	Brand	
Pump head	Stainless steel	Model	E0037T211 V18
Stage casing	Stainless steel	Nominal power	0.37 kW
Shaft	Stainless steel	Rated frequency	50 Hz
Mechanical seal	Silicon carbide/silicon carbide	Rated voltage	400 V
Diffuser	Stainless steel	Rated current	0.91 A
Impeller	Stainless steel	No. Poles	2
Wear ring	PTFE	Rotation speed	2800 1/min
Inlet/Outlet Flanges	Cast iron	Efficiency 4/4 - 3/4	70 %
Pump casing	Stainless steel	Power factor 4/4 - 3/4	0.81
Base plate	Cast iron	Type of motor	3 ~
Seal ring	Rubber EPDM	Is/In	6
		Ts/Tn	2.3
		Protection class	IP55
		Insulation class	F
		Thermal protection	n.d.
		Efficiency class	

Notes:	(*) View from electric motor side
OFFER No.	Pos.
	Date
	14/01/2020