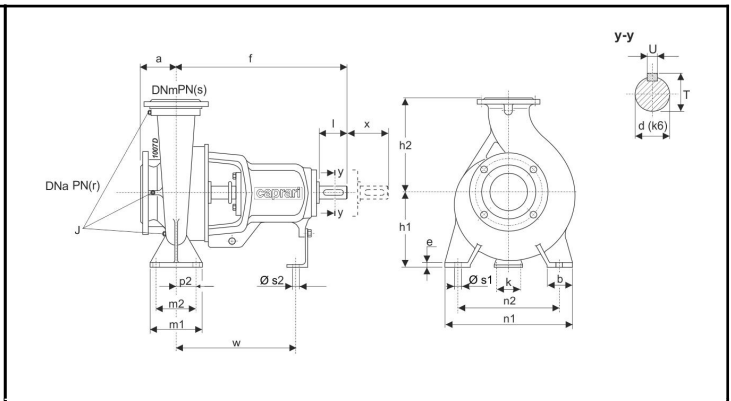
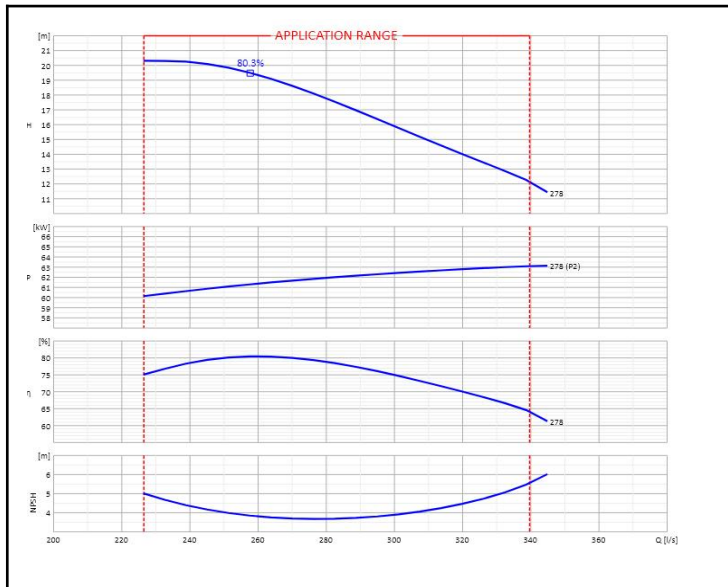


Customer:		Ref.:	
Item	Quantity	Required flow	n.d.
Type	CENTRIFUGAL PUMP WITH HORIZONTAL SHAFT	Model	NCH250-250



DNm	250	f	885	n2	500
DNa	300	k	180	p2	n.d.
J	G3/8x3	l	140	s2	18
T	69	r	16	h1	355
U	18	s	16	m1	250
a	225	w	670	n1	630
b	125	x	250	s1	23
d	65	h2	560		
e	24	m2	190		

OPERATING DATA - ISO 9906:2012 3B - M.E.I. ≥ 0.40					CONSTRUCTION CHARACTERISTICS			
Q [l/s]	H [m]	P [kW]	η [%]	NPSH [m]	UNI delivery flange DN	250	PN	16
					UNI suction flange DN	300	PN	16
					Total weight	434		Kg
					No. Stages	1		
					Pump seal	Mechanical		
					Type of installation	Horizontal		

OPERATING LIMITS			OPERATING CHARACTERISTICS			
Pumped liquid	Water		Service flow rate	n.d.		n.d.
Max. temperature of pumped liquid	n.d.		Service head	n.d.		n.d.
Maximum density	1	kg/dm ³	Qmin	Qmax	226.5	339.64
Maximum viscosity	1	mm ² /s	H (Q=0)	Hmax (Qmin)	28.32	20.28
Max. solid content	50	g/m ³	P2 Duty Point	P2max	n.d.	63.05
Max. no. starts/hr	n.d.		Pump hydraulic efficiency	n.d.		n.d.
Maximum operating time with closed port	2min (3500 rpm) 6min (1450 rpm) [40 °C]		Rotation speed	1450		1/min
			Sense of rotation (*)	Clockwise		
Number of pumps installed			Operating	1		Stand-by
			Stand-by	0		

PUMP MATERIALS	
Pump casing	Cast iron
Impeller	Cast iron
Lantern bracket	Cast iron
Shaft	Stainless steel
Wear ring	Cast iron
Support	Cast iron
Bearing	n.d.
Water retainer ring	Nitrile rubber
Feather key	Stainless steel
Feather key 2	Steel
Seal ring	Nitrile rubber
Mechanical seal	Silicon carbide/silicon carbide
Spacer sleeve	Stainless steel
Seal ring	Nitrile rubber
Cover mechanical seal	Cast iron
Duck foot pedestal	Steel
Cover bearing	Cast iron

Notes:	(*) View from motor coupling side
OFFER No.	Pos.
	Date 16/01/2020